



**BAUDAT**  
GmbH & Co. KG

[www.baudat.de](http://www.baudat.de)

Product catalog  
2023



**Our company BAUDAT GmbH & Co. KG, founded in 1966, has stood for the production of high-quality tools for more than 56 years.**

According to our company motto „Quality in your hand!“ our 55 employees produce high quality tools at our long established location in the south of Germany.

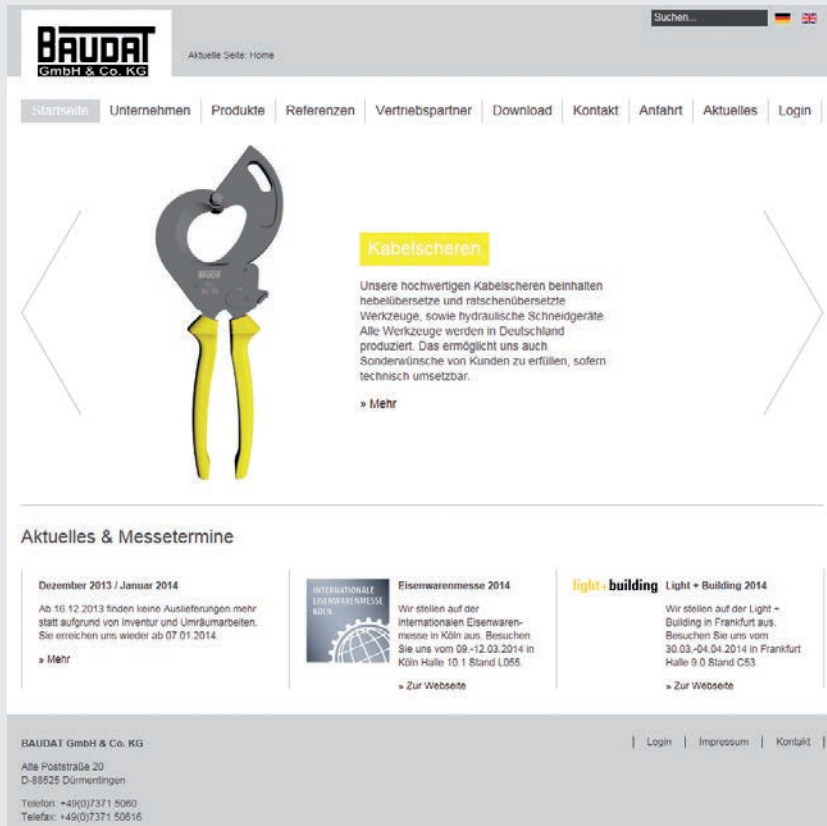
We develop, produce and deliver special tools for a number of major companies in the sanitary, telecommunication, power supply networks and automotive industry, many of which are custom made to provide particular client solutions. In these cases we are the customer's „extended workbench“ and by this means we aim to build long lasting and successful cooperation with our clients.

Our principal resources are self trained craftsmen and the technical know-how of our engineering department. Combined with our highly flexible manufacturing and marketing these resources achieve high quality solutions and products, which are the key to our customer relations, and therefore to our own success.

We offer quality  
„Made in Germany“  
in your hand!

**BAUDAT**  
GmbH & Co. KG

Alte Poststrasse 20  
D-88525 Dürmentingen  
Tel.: +49 (0) 7371 / 506-0  
Fax +49 (0) 7371 / 506-16  
Email: [info@baudat.de](mailto:info@baudat.de)  
[www.baudat.de](http://www.baudat.de)



**Of course you can also find on**  
our homepage [www.baudat.de](http://www.baudat.de)  
our whole product range.

You also will be informed  
about current events and  
Exhibitions.

## Quality standard:



## Location:





New products

6 - 7



Cable cutters

8 - 21



Wire rope cutters

22 - 32



old plate punchers program

33 - 44

new plate punchers program

45 - 57



Hydraulic pumps

58 - 65



Special tools

66 - 68





## BAUDAT - New products

### Baudat Cutting units for Bosch Cordless drill/driver GSR 12V-35FC Professional

Product advantages at a glance:

Inexpensive variant for battery cutting

Extremely powerful thanks to the latest battery technology at 12 V. The competition needs 18 V for this

Use of several cutting units with one drive through the Flexi-Click system from Bosch

When the cutting attachment is not in use, the cordless drill can be used as usual

This tool has a purely mechanical drive and is less susceptible than hydraulic drives

Electronics arm. Therefore suitable for construction sites

The warranty for the Bosch cordless drill remains unaffected. The Bosch service network can be used

The cutting unit can be rotated 360°

The Bosch cordless drill can be obtained anywhere because it is a standard product

Sustainable design (low in plastic). This detachable cutting unit is 98% recyclable

Patented / patented tool system

Cutting unit for Cu-Al-cable on page 14



Cutting unit for wire ropes on page 26





## New generation plate punchers 8X

Product advantages at a glance:

A plate puncher for steel and stainless steel plates up to max. 3 mm

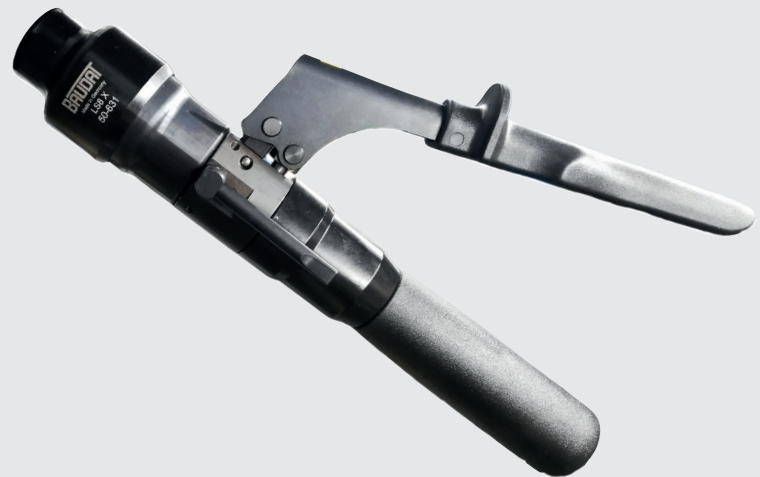
lighter and more compact than our previous generations

all round punching tools are compatible with other manufacturers on the market

More on page 45

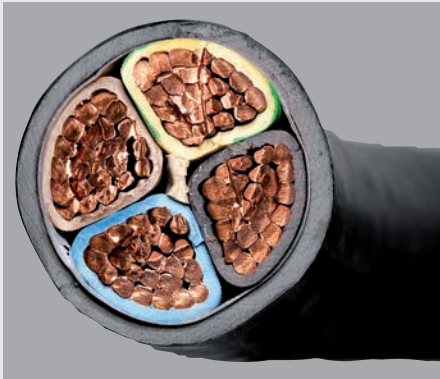


- Cutting edges with 3-fold cleavage of Ø 15,2 mm to Ø 60 mm, therefore no jamming in the matrix
- One cutting edges and matrix for steel and stainless steel plates
- Matrix with four crosshair markins for easy, central alignment



### INFO:

Our old plate punchers program  
(p.33 to p.44)  
only while stocks last !



Selection table cable cutters

9

Leverage cable cutters

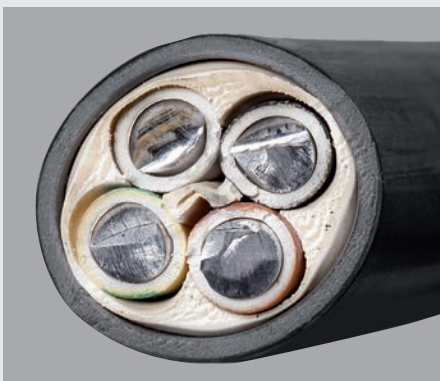
10

Ratchet cable cutters  
K- and SC-Serie

10 - 12

Ratchet cable cutters  
EC-Serie

13



Cordless cable cutting units  
with accessories

14 - 15

Hydraulic cable cutters  
with accessories

16 - 20



Selection table cable cutters				
Cutting material Cu-Al-cable up to	further cutting material	Cutting tool	Order no.	page
Ø 20 mm		E1	80-415	10
Ø 24 mm		K24	80-152	10
Ø 31 mm		E2	80-413	10
Ø 32 mm		K32	80-155	10
		K32 i		11
Ø 35 mm		SK 35	80-195	11
		AF35 C	80-349	14
Ø 38 mm		EC38	80-112	13
Ø 40 mm		SC40	80-058	12
Ø 50 mm		E3	80-429	10
Ø 55 mm		SC55	80-057	12
		EC55	80-111	13
		SCZ55	80-067	12
		AS55 C	80-346	14
Ø 60 mm		HS3 6 D CU	60-138	16
		HS3 6 RH CU	60-140	16
Ø 65 mm		KB 10/65 RH	60-127	19
Ø 100 mm		HS4 D CU	60-135	17
		HS4 RH CU	60-137	17
		KB 20/100 RH	60-125	19
Ø 130 mm		HS5 D CU	60-046	18
		HS5 RH CU	60-084	18
Ø 160 mm		KB 30/160 RH	60-020	20
Ø 200 mm		KB 30/200 RH	60-146	20

The hydraulic cable cutters described on the following pages only represent an overview with the general properties. Depending on the application, the hydraulic cable cutters can be operated with our foot, motor and battery pumps. An adaption to individual applications is generally possible. We would be glad to provide you with the optimal combination for your application.



#### Leverage two handed cable cutters

Description:	E1	E2	E3
Order no.:	80-415	80-413	80-429
Capacity:	Cu-Al-cable up to max. Ø 20 mm or 120 mm <sup>2</sup>	Cu-Al-cable up to max. Ø 31 mm or 250 mm <sup>2</sup>	Cu-Al-cable up to max. Ø 50 mm or 500 mm <sup>2</sup>
Length:	370 mm	525 mm	775 mm
Weight:	0,7 kg	1,4 kg	3,1 kg
In case of different cutting material, please contact the manufacturer			
Surface-grinded blades made up of high-coated steel			
Sickle-shaped, rounded blades assure precise cutting			
Top stability and minimal dead weight			
All parts replaceable			
Stationary versions are also available on request			



#### Ratchet single handed cable cutters

Description:	K24	K32
Order no.:	80-152	80-155
Capacity:	Cu-Al-cable up to max. Ø 24 mm Cu-cable max. 180 mm <sup>2</sup> Al-cable max. 250 mm <sup>2</sup>	Cu-Al-cable up to max. Ø 32 mm Cu-cable max. 250 mm <sup>2</sup> Al-cable max. 320 mm <sup>2</sup>
Length:	290 mm	310 mm
Weight:	0,9 kg	1,0 kg
In case of different cutting material, please contact the manufacturer		
Surface-grinded blades made up of high-coated steel		
Blades releasable at any point during cutting		
Open jaws for faster operation and greater access to restricted spaces		
The blade returns to its starting position by spring return		
All parts replaceable		



Isolation cover

Ratchet single handed cable cutter,  
insulated up to 1000 V (K32i)

Order no.:	252532	Ratchet single handed cable cutter, insulated
	252550	Isolation cover
Capacity:	Cu-Al-cable up to max. Ø 32 mm Cu-cable max. 250 mm² Al-cable max. 320 mm²	
Length:	310 mm	
Weight:	1,1 kg	
No cumbersome folding down of the knife		
The cutting process can be interrupted in any position		
The blade returns to its starting position by spring return		
Professional multi-layer immersion insulation		
Available from our partner Lemp		
www.galemp.de		



Ratchet single handed cable cutter

Description:	SK35
Order no.:	80-195
Capacity:	Cu-Al-cable up to max. Ø 35 mm Cu-cable max. 300 mm <sup>2</sup> Al-cable max. 320 mm <sup>2</sup>
Length:	280 mm
Weight:	1,2 kg
In case of different cutting material, please contact the manufacturer	
Surface-grinded blades made up of high-coated steel	
Open jaws for faster operation and greater access to restricted spaces	
Blades releasable at any point during cutting	
The blade returns to its starting position by spring return	
Fatigue-proof cutting as a result of ergonomic form and soft material of handles	
All parts replaceable	



Ratchet single handed cable cutters

Description:	SC40	SC55
Order no.:	80-058	80-057
Capacity:	Cu-Al-cable up to max. Ø 40 mm	Cu-Al-cable up to max. Ø 55 mm
Length:	240 mm	315 mm
Weight:	0,8 kg	1,6 kg

In case of different cutting material, please contact the manufacturer

Surface-grinded blades made up of high-coated steel

Blades releasable at any point during cutting

Fatigue-proof cutting as a result of ergonomic form and soft material of handles

All parts replaceable



Ratchet two handed cable cutters

Description:	SCZ55
Order no.:	80-067
Capacity:	Cu-Al-cable up to max. Ø 55 mm
Length:	435 mm
Weight:	1,7 kg

In case of different cutting material, please contact the manufacturer

Surface-grinded blades made up of high-coated steel

Blades releasable at any point during cutting

Easy cutting due to the combination of ratchet transmission and long handholds

All parts replaceable



Ratchet single handed cable cutters		
Description:	EC38	EC55
Order no.:	80-112	80-111
Capacity:	Cu-Al-cable up to max. Ø 38 mm Cu-cable max. 300 mm <sup>2</sup> Al-cable max. 350 mm <sup>2</sup>	Cu-Al-cable up to max. Ø 55 mm Cu-cable max. 450 mm <sup>2</sup> Al-cable max. 500 mm <sup>2</sup>
Length:	275 mm	285 mm
Weight:	0,8 kg	0,9 kg
In case of different cutting material, please contact the manufacturer		
Surface-grinded blades made up of high-coated steel		
Blades releasable at any point during cutting		
All parts replaceable		



#### Replaceable cable cutting units

Description:	AF 35C	AS 55C
Order no.:	80-349	80-346
Capacity:	Cu-Al-cable up to max. Ø 35 mm	Cu-Al-cable up to max. Ø 55 mm
Dimensions:	Length: 320 mm Width: 160 mm Height: 160 mm	Length: 285 mm Width: 180 mm Height: 160 mm
	Open jaws for faster operation and greater access to restricted spaces	-
	The blade returns to its starting position by spring return	-
Weight incl. Cordless drill/driver and battery: approx. 2,5 kg		
Power unit: Bosch Cordless drill/driver GSR 12V-35FC Professional (not included in the delivery!)		
In case of different cutting material, please contact the manufacturer		
Cutting unit can be rotated 360°		
Blades releasable at any point during cutting		
Made in Germany		
Accessories see page 15		



**Bosch Handle**

Order no.: 00-031.43 (Bosch Order no.: 1602025024)

Thread: M10



**Bosch Cordless drill/driver GSR 12V-35FC Professional with accessories**

Order no.:	00-109.39 (Bosch Order no.: 0 601 9H3 000)	00-109.40 (Bosch Order no.: 0 601 9H3 001)
Consists of:	<ul style="list-style-type: none"><li>- 2x Battery GBA 12V 3.0Ah (1 600 A00 X79)</li><li>- L-BOXX 102 (1 600 A01 2FZ)</li><li>- Drill chuck adapter GFA 12-B (1 600 A00 F5H)</li><li>- Bit holder adapter GFA 12-X (1 600 A00 F5J)</li><li>- Battery charger GAL 12V-40 Professional (1 600 A01 9R3)</li><li>- Angle adapter GFA 12-W Professional (1 600 A00 F5K)</li><li>- Off-set angle adapter GFA 12-E (1 600 A00 F5L)</li></ul>	<ul style="list-style-type: none"><li>- 2x Battery GBA 12V 3.0Ah (1 600 A00 X79)</li><li>- L-BOXX 102 (1 600 A01 2FZ)</li><li>- Drill chuck adapter GFA 12-B (1 600 A00 F5H)</li><li>- Battery charger GAL 12V-40 Professional (1 600 A01 9R3)</li></ul>



#### Hydraulic cable cutters

Description:	HS3 6 D CU	HS3 6 RH CU
Order no.:	60-138	60-140
Capacity:	Cu-Al-cable up to max. Ø 60 mm or 570 mm <sup>2</sup>	
Length:	420 mm	410 mm
Weight:	4,6 kg	5,1 kg
Return:	spring return	hydraulic
Compressive force:	56 kN at 450 bar	
Max. working pressure:	500 bar	
Required oil volume:	59 cm <sup>3</sup>	62 cm <sup>3</sup>
Connection:	G 1/2 Female thread	P G 1/2 Female thread R M16x1,5 External thread with 24° inner cone

In case of different cutting material, please contact the manufacturer

Pressure of the jaws is relative to the cutting power, so the jaws do not get jammed

Open jaws for instant operation

Can be connected to following pumps:	Accessories:	Can be connected to following pumps:	Accessories:
Motor pump HMP1 (50-186) Battery pump AP3 (50-185) Battery pump AP4 (50-189)	4,0 m Hose package with hand switch (50-706) or 4,0 m Hose package with foot switch (50-707)	Motor pump HMP2 WE RH (50-106) Motor pump HMP2 DE RH (50-104) Motor pump HMP3 DE RH (50-057) Motor pump HMP3 DE RH D (50-136)	4,0 m Hose package with hand switch (50-710) or 4,0 m Hose package with foot switch (50-718)

Note: the motor pump HMP1 and HMP2 as well as the battery pumps AP3 and AP4 are not designed for continuous operation

Other lengths of hydraulic hose are available on request



Hydraulic cable cutters				
Description:		HS4 D CU		HS4 RH CU
Order no.:		60-135		60-137
Capacity:		Cu-Al-cable up to max. Ø 100 mm or 1000 mm²		
Length:		680 mm		620 mm
Weight:		17,5 kg		16,0 kg
Return:		spring return		hydraulic
Compressive force:		127 kN at 450 bar		
Max. working pressure:		500 bar		500 bar Also available as a 700 bar variant on request
Required oil volume:		250 cm³		
Connection:		G 1/2 Female thread		P G 1/2 Female thread R M16x1,5 External thread with 24° inner cone
In case of different cutting material, please contact the manufacturer				
Pressure of the jaws is relative to the cutting power, so the jaws do not get jammed				
Open jaws for instant operation				
	Can be connected to following pumps:	Accessories:	Can be connected to following pumps:	Accessories:
	Motor pump HMP2 WE (50-101) Motor pump HMP2 DE (50-102) Motor pump HMP3 DE (50-056) Motor pump HMP3 DE D (50-135) Battery pump AP4 (50-189)	4,0 m Hose package with hand switch (50-706) or 4,0 m Hose package with foot switch (50-707)	Motor pump HMP2 WE RH (50-106) Motor pump HMP2 DE RH (50-104) Motor pump HMP3 DE RH (50-057) Motor pump HMP3 DE RH D (50-136)	4,0 m Hose package with hand switch (50-710) or 4,0 m Hose package with foot switch (50-718)
Note: the motor pump HMP2 and the battery pump AP4 are not designed for continuous operation				
Other lengths of hydraulic hose are available on request				



#### Hydraulic cable cutters

Description:	HS5 D CU	HS5 RH CU
Order no.:	60-046	60-084
Capacity:	Cu-Al-cable up to max. Ø 130 mm or 2000 mm²	
Length:	750 mm	750 mm
Weight:	30,0 kg	29,0 kg
Return:	spring return	hydraulic
Compressive force:	226 kN at 450 bar	
Max. working pressure:	500 bar	500 bar Also available as a 700 bar variant on request
Required oil volume:	530 cm³	
Connection:	G 1/2 Female thread	P G 1/2 Female thread R M16x1,5 External thread with 24° inner cone

In case of different cutting material, please contact the manufacturer

Pressure of the jaws is relative to the cutting power, so the jaws do not get jammed

Open jaws for instant operation

Can be connected to following pumps:	Accessories:	Can be connected to following pumps:	Accessories:
Motor pump HMP2 WE (50-101)	4,0 m Hose package with hand switch (50-706)	Motor pump HMP2 WE RH (50-106)	4,0 m Hose package with hand switch (50-710)
Motor pump HMP2 DE (50-102)	or	Motor pump HMP2 DE RH (50-104)	or
Motor pump HMP3 DE (50-056)	4,0 m Hose package with foot switch (50-707)	Motor pump HMP3 DE RH (50-057)	4,0 m Hose package with foot switch (50-718)
Motor pump HMP3 DE D (50-135)		Motor pump HMP3 DE RH D (50-136)	
Battery pump AP4 (50-189)			

Note: the motor pump HMP2 is not designed for continuous operation

Other lengths of hydraulic hose are available on request



Hydraulic cable cutters				
Description:		KB10/65 RH		KB20/100 RH
Order no.:		60-127		60-125
Capacity:		Cu-Al-cable up to max. Ø 65 mm		Cu-Al-cable up to max. Ø 100 mm
Length:		450 mm		610 mm
Weight:		16,0 kg		32,0 kg
Return:		hydraulic		
Compressive force:		106 kN at 450 bar		226 kN at 450 bar
Max. working pressure:		500 bar Also available as a 700 bar variant on request		
Required oil volume:		200 cm³		650 cm³
Connection:		P G 1/2 Female thread R M16x1,5 External thread with 24° inner cone		
In case of different cutting material, please contact the manufacturer				
The guillotine-section guarantees a very neat cut edge				
	Can be connected to following pumps:	Accessories:	Can be connected to following pumps:	Accessories:
	Motor pump HMP2 WE RH (50-106) Motor pump HMP2 DE RH (50-104)	4,0 m Hose package with hand switch (50-710) or 4,0 m Hose package with foot switch (50-718)	Motor pump HMP2 WE RH (50-106) Motor pump HMP2 DE RH (50-104) Motor pump HMP3 DE RH (50-057) Motor pump HMP3 DE RH D (50-136)	4,0 m Hose package with hand switch (50-710) or 4,0 m Hose package with foot switch (50-718)
Note: the motor pump HMP2 is not designed for continuous operation				
Other lengths of hydraulic hose are available on request				



#### Hydraulic cable cutters

Description:	KB30/160 RH	KB30/200 RH
Order no.:	60-020	60-146
Capacity:	Cu-Al-cable up to max. Ø 160 mm	Cu-Al-cable up to max. Ø 200 mm
Length:	950 mm	1020 mm
Weight:	68,0 kg	95,0 kg
Return:	hydraulic	
Compressive force:	282 kN at 420 bar	
Max. working pressure:	420 bar Also available as a 700 bar variant on request	
Required oil volume:	1600 cm <sup>3</sup>	1800 cm <sup>3</sup>
Connection:	P G 1/2 Female thread R M16x1,5 External thread with 24° inner cone	

In case of different cutting material, please contact the manufacturer

The guillotine-section guarantees a very neat cut edge

Can be connected to following pumps:

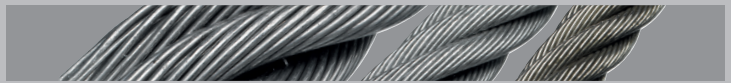
Motor pump HMP3 DE (50-056)  
Motor pump HMP3 DE D (50-135)

Accessories:

4,0 m Hose package with hand switch (50-710)  
or  
4,0 m Hose package with foot switch (50-718)

Other lengths of hydraulic hose are available on request





Selection table wire rope cutters 23

Leverage wire rope cutters 24

Ratchet wire rope cutters 24 - 25

Cordless wire rope cutting units with accessories 26



Hydraulic wire rope cutters with accessories 27 - 30

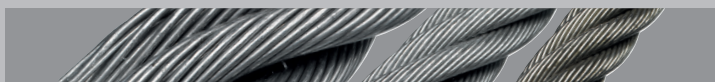
**Hydraulic flat belt cutters** 31



Selection table wire rope cutters				
Cutting material <b>flex. wire ropes up to</b>	further cutting material	Cutting tool	Order no.	Page
Ø 6 mm	Ø 8 mm ( $\leq 750 \text{ N/mm}^2$ ), Ø 10 mm ( $\leq 220 \text{ N/mm}^2$ )	ES1	80-416	24
Ø 10 mm	Stainless and high compressed wire ropes Ø 8 mm	KS10	80-153	24
	Ø 11 mm ( $\leq 750 \text{ N/mm}^2$ ), Ø 12 mm ( $\leq 220 \text{ N/mm}^2$ )	ES2	80-414	24
Ø 13 mm	Stainless and high compressed wire ropes Ø 10 mm	KS13	80-156	24
	Stainless and high compressed wire ropes Ø 10 mm	SCS13	80-061	25
		AS13 S	80-348	26
		AF13 S	80-661	26
Ø 14 mm	Ø 16 mm ( $\leq 750 \text{ N/mm}^2$ ), Ø 18 mm ( $\leq 220 \text{ N/mm}^2$ )	ES3	80-428	24
Ø 18 mm	Stainless and high compressed wire ropes Ø 15 mm	SCS18	80-059	25
		KB 5/26 Kompact	60-155	29
		KB 5/26	60-123	29
Ø 20 mm	Stainless and high compressed wire ropes Ø 16 mm	SCSZ20	80-068	25
		HS3 6 D Wire rope	60-139	29
		HS3 6 RH Wire rope	60-141	29
Ø 28 mm	Steel-Al-cable Ø 38 mm	HS4 D Wire rope	60-134	28
	Steel-Al-cable Ø 38 mm	HS4 RH Wire rope	60-136	28
Ø 32 mm		KB 10/40 RH	60-191	30
Ø 38 mm		KB 20/50 RH	60-181	30
60 mm Width	Polymer flat belts with integrated wire ropes up to max. 3 mm height and 60 mm width	HCP60	60-151	31
			60-192	31

The hydraulic wire rope cutters described on the following pages only represent an overview with the general properties. Depending on the application, the hydraulic wire rope cutters can be operated with our foot, motor and battery pumps. An adaption to individual applications is generally possible.

We would be glad to provide you with the optimal combination for your application.



#### Leverage two handed wire rope cutters

Description:	ES1	ES2	ES3
Order no.:	80-416	80-414	80-428
Capacity:	Flexible wire ropes up to max. Ø 6 mm ( $\leq 1800 \text{ N/mm}^2$ ), up to max. Ø 8 mm ( $\leq 750 \text{ N/mm}^2$ ), up to max. Ø 10 mm ( $\leq 220 \text{ N/mm}^2$ )	Flexible wire ropes up to max. Ø 10 mm ( $\leq 1800 \text{ N/mm}^2$ ), up to max. Ø 11 mm ( $\leq 750 \text{ N/mm}^2$ ), up to max. Ø 12 mm ( $\leq 220 \text{ N/mm}^2$ )	Flexible wire ropes up to max. Ø 14 mm ( $\leq 1800 \text{ N/mm}^2$ ), up to max. Ø 16 mm ( $\leq 750 \text{ N/mm}^2$ ), up to max. Ø 18 mm ( $\leq 220 \text{ N/mm}^2$ )
Length:	345 mm	490 mm	720 mm
Weight:	0,7 kg	1,3 kg	2,7 kg
In case of different cutting material, please contact the manufacturer			
Surface-grinded blades made up of high-coated steel			
Sickle-shaped, rounded blades assure precise cutting			
Top stability and minimal dead weight			
All parts replaceable			
Stationary versions are also available on request			



#### Ratchet single handed wire rope cutters

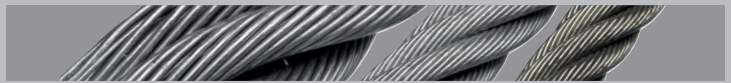
Description:	KS10	KS13
Order no.:	80-153	80-156
Capacity:	Flexible wire ropes up to max. Ø 10 mm, Stainless and high compressed wire ropes up to max. Ø 8 mm	Flexible wire ropes up to max. Ø 13 mm, Stainless and high compressed wire ropes up to max. Ø 10 mm
Length:	270 mm	285 mm
Weight:	0,9 kg	1,0 kg
In case of different cutting material, please contact the manufacturer		
Surface-grinded blades made up of high-coated steel		
Blades releasable at any point during cutting		
The blade returns to its starting position by spring return		
All parts replaceable		



Ratchet single handed wire rope cutters		
Description:	SCS13	SCS18
Order no.:	80-061	80-059
Capacity:	Flexible wire ropes up to max. Ø 13 mm, Stainless and high compressed wire ropes up to max. Ø 10 mm	Flexible wire ropes up to max. Ø 18 mm, Stainless and high compressed wire ropes up to max. Ø 15 mm
Length:	245 mm	315 mm
Weight:	0,9 kg	1,7 kg
In case of different cutting material, please contact the manufacturer		
Surface-grinded blades made up of high-coated steel		
Blades releasable at any point during cutting		
Fatigue-proof cutting as a result of ergonomic form and soft material of handles		
All parts replaceable		

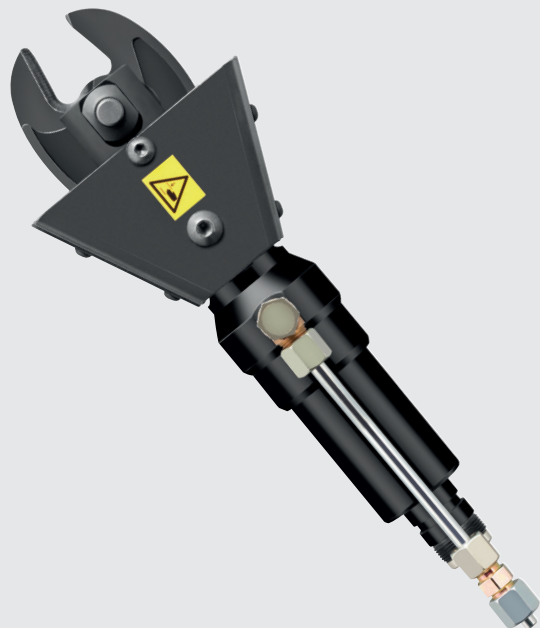


Ratchet two handed wire rope cutters	
Description:	SCSZ20
Order no.:	80-068
Capacity:	Flexible wire ropes up to max. Ø 20 mm, Stainless and high compressed wire ropes up to max. Ø 16 mm
Length:	440 mm
Weight:	1,9 kg
In case of different cutting material, please contact the manufacturer	
Surface-grinded blades made up of high-coated steel	
Blades releasable at any point during cutting	
Easy cutting due to the combination of ratchet transmission and long handholds	
All parts replaceable	

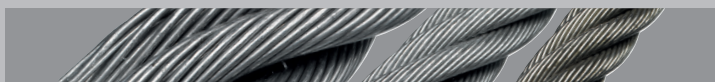


#### Replaceable wire rope cutting units

Description:	AF 13S	AS 13S
Order no.:	80-661	80-348
Capacity:	Flexible wire ropes up to max. Ø 13 mm, Stainless and high compressed wire ropes up to max. Ø10 mm	
Dimensions:	Length: 300 mm Width: 160 mm Height: 160 mm	Length: 285 mm Width: 180 mm Height: 160 mm
	The blade returns to its starting position by spring return	-
Weight incl. Cordless drill/driver and battery: approx. 2,5 kg		
Power unit: Bosch Cordless drill/driver GSR 12V-35FC Professional (not included in the delivery!)		
In case of different cutting material, please contact the manufacturer		
Cutting unit can be rotated 360°		
Blades releasable at any point during cutting		
Made in Germany		
Accessories see page 15		



Hydraulic wire rope cutters				
Description:	HS3 6 D Wire rope		HS3 6 RH Wire rope	
Order no.:	60-139		60-141	
Capacity:	Flexible wire ropes up to max. Ø 20 mm			
Length:	380 mm		370 mm	
Weight:	4,2 kg		4,7 kg	
Return:	spring return		hydraulic	
Compressive force:	56 kN at 450 bar			
Max. working pressure:	500 bar			
Required oil volume:	58 cm³		62 cm³	
Connection:	G 1/2 Female thread		P G 1/2 Female thread R M16x1,5 External thread with 24° inner cone	
In case of different cutting material, please contact the manufacturer				
Pressure of the jaws is relative to the cutting power, so the jaws do not get jammed				
Open jaws for instant operation				
	Can be connected to following pumps:	Accessories:	Can be connected to following pumps:	Accessories:
	Motor pump HMP1 (50-186) Motor pump HMP2 WE (50-800) Battery pump AP3 (50-185) Battery pump AP4 (50-189)	4,0 m Hose package with hand switch (50-706) or 4,0 m Hose package with foot switch (50-707)	Motor pump HMP2 WE RH (50-106) Motor pump HMP2 DE RH (50-104) Motor pump HMP3 DE RH (50-057) Motor pump HMP3 DE RH D (50-136)	4,0 m Hose package with hand switch (50-710) or 4,0 m Hose package with foot switch (50-718)
Note: the motor pump HMP1 and HMP2 as well as the battery pumps AP3 and AP4 are not designed for continuous operation				
Other lengths of hydraulic hose are available on request				



#### Hydraulic wire rope cutters

Description:	HS4 D Wire rope	HS4 RH Wire rope
Order no.:	60-134	60-136
Capacity:	Fine stranded wire ropes up to max. Ø 28 mm, Steel-Al-cable up to max. Ø 38 mm	
Length:	650 mm	590 mm
Weight:	17,0 kg	15,5 kg
Return:	spring return	hydraulic
Compressive force:	127 kN at 450 bar	
Max. working pressure:	500 bar	500 bar Also available as a 700 bar variant on request
Required oil volume:	250 cm <sup>3</sup>	
Connection:	G 1/2 Female thread	P G 1/2 Female thread R M16x1,5 External thread with 24° inner cone

In case of different cutting material, please contact the manufacturer

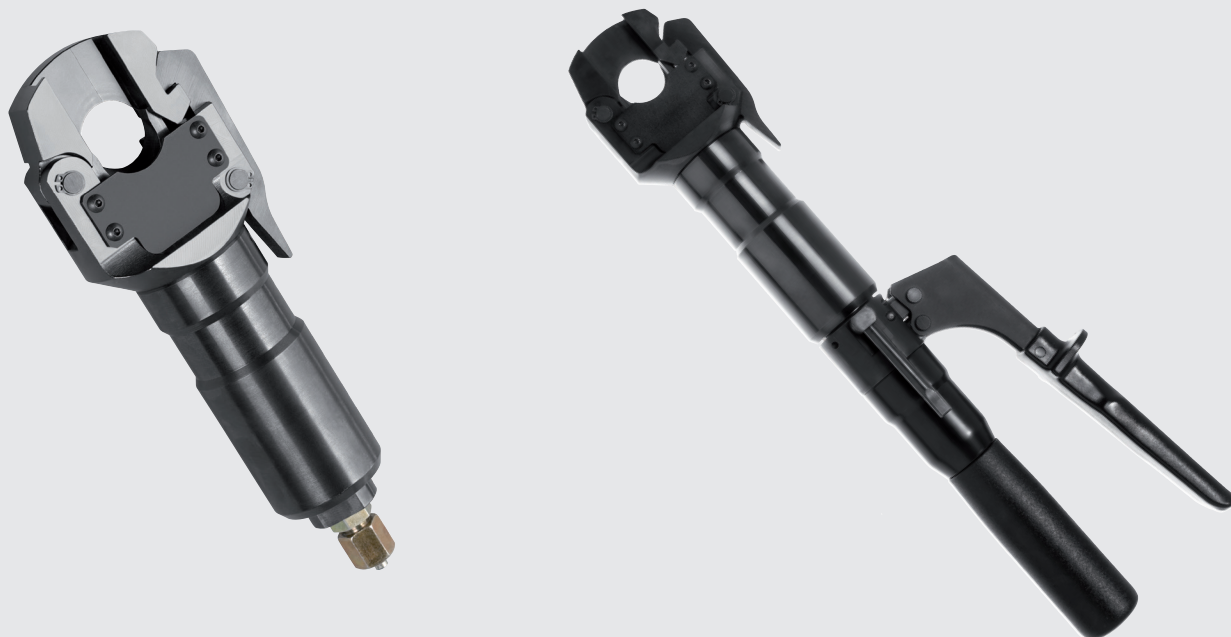
Pressure of the jaws is relative to the cutting power, so the jaws do not get jammed

Open jaws for instant operation

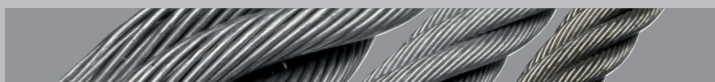
Can be connected to following pumps:	Accessories:	Can be connected to following pumps:	Accessories:
Motor pump HMP2 WE (50-101)	4,0 m Hose package with hand switch (50-706)	Motor pump HMP2 WE RH (50-106)	4,0 m Hose package with hand switch (50-710)
Motor pump HMP2 DE (50-102)	or	Motor pump HMP2 DE RH (50-104)	or
Motor pump HMP3 DE (50-056)	4,0 m Hose package with foot switch (50-707)	Motor pump HMP3 DE RH (50-057)	4,0 m Hose package with foot switch (50-718)
Motor pump HMP3 DE D (50-135)		Motor pump HMP3 DE RH D (50-136)	
Battery pump AP4 (50-189)			

Note: the motor pump HMP2 and the battery pump AP4 are not designed for continuous operation

Other lengths of hydraulic hose are available on request



Hydraulic wire rope cutters		
Description:	KB5/26 for hose connection	KB5/26 kompakt incl. hand pump
Order no.:	60-123	60-155
Capacity:	Flexible wire ropes up to max. Ø 18 mm ( $\leq 1800 \text{ N/mm}^2$ )	
Length:	260 mm	450 mm
Weight:	2,4 kg	3,7 kg
Return:	spring return	Outlet lever
Compressive force:	56 kN at 450 bar	
Max. working pressure:	500 bar	
Required oil volume:	40 cm <sup>3</sup>	-
Connection:	G 1/2 Female thread	incl. hand pump
	-	Robust, handy, universal usable
	-	About 55 applications at full stroke
In case of different cutting material, please contact the manufacturer		
The guillotine-section guarantees a very neat cut edge		
Can be connected to following pumps:	Accessories:	
Motor pump HMP1 (50-186)	4,0 m Hose package with hand switch (50-706)	
Battery pump AP3 (50-185)	or	
Battery pump AP4 (50-189)	4,0 m Hose package with foot switch (50-707)	
		-
Note: the motor pump HMP1 and the battery pumps AP3 and AP4 are not designed for continuous operation		-
Other lengths of hydraulic hose are available on request		-



#### Hydraulic wire rope cutters

Description:	KB10/40 RH	KB20/50 RH
Order no.:	60-191	60-181
Capacity:	Flexible wire ropes up to max. Ø 32 mm ( $\leq 1800 \text{ N/mm}^2$ )	Flexible wire ropes up to max. Ø 38 mm ( $\leq 1800 \text{ N/mm}^2$ )
Length:	450 mm	610 mm
Weight:	16,0 kg	32,0 kg
Return:	hydraulic	
Compressive force:	106 kN at 450 bar	226 kN at 450 bar
Max. working pressure:	450 bar	
Required oil volume:	200 cm <sup>3</sup>	650 cm <sup>3</sup>
Connection:	P G 1/2 Female thread R M16x1,5 External thread with 24° inner cone	

In case of different cutting material, please contact the manufacturer

The guillotine-section guarantees a very neat cut edge

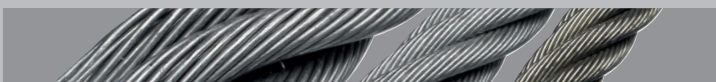
Can be connected to following pumps:	Accessories:	Can be connected to following pumps:	Accessories:
Motor pump HMP2 WE RH (50-106) Motor pump HMP2 DE RH (50-104)	4,0 m Hose package with hand switch (50-710) or 4,0 m Hose package with foot switch (50-718)	Motor pump HMP2 WE RH (50-106) Motor pump HMP2 DE RH (50-104) Motor pump HMP3 DE RH (50-057) Motor pump HMP3 DE RH D (50-136)	4,0 m Hose package with hand switch (50-710) or 4,0 m Hose package with foot switch (50-718)

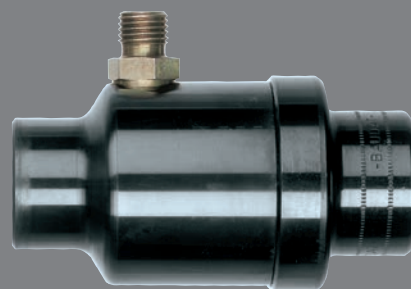
Note: the motor pump HMP2 is not designed for continuous operation

Other lengths of hydraulic hose are available on request



Hydraulic flat belt cutter		
Description:	HCP60 for hose connection	HCP60 kompakt incl. hand pump
Order no.:	60-192	60-151
Capacity:	Polymer flat belts with integrated wire ropes up to max. 3 mm height and 60 mm width	
Length:	157 mm	386 mm
Weight:	3,0 kg	4,5 kg
Return:	spring return	Outlet lever
Compressive force:	50 kN at 530 bar	
Max. working pressure:	530 bar	
	-	Robust, handy, universal usable
	-	About 21 applications at full stroke
In case of different cutting material, please contact the manufacturer		
The guillotine-section guarantees a very neat cut edge		
Can be connected to following pumps:	Accessories:	
Motor pump HMP1 (50-186)	4,0 m Hose package with hand switch (50-706)	
Battery pump AP3 (50-185)	or	
Battery pump AP4 (50-189)	4,0 m Hose package with foot switch (50-707)	
		-
Note: the motor pump HMP1 and the battery pumps AP3 and AP4 are not designed for continuous operation		-
Other lengths of hydraulic hose are available on request		-





**BAUDAT**  
GmbH & Co. KG

[www.baudat.de](http://www.baudat.de)

Expiring plate punchers  
program

Only while stocks last!



Comparison of the old and new  
plate punchers program 35

Control options for old and new  
plate punchers 36 - 37

Selection table rods 38

Punching tools for steel plates 39 - 42

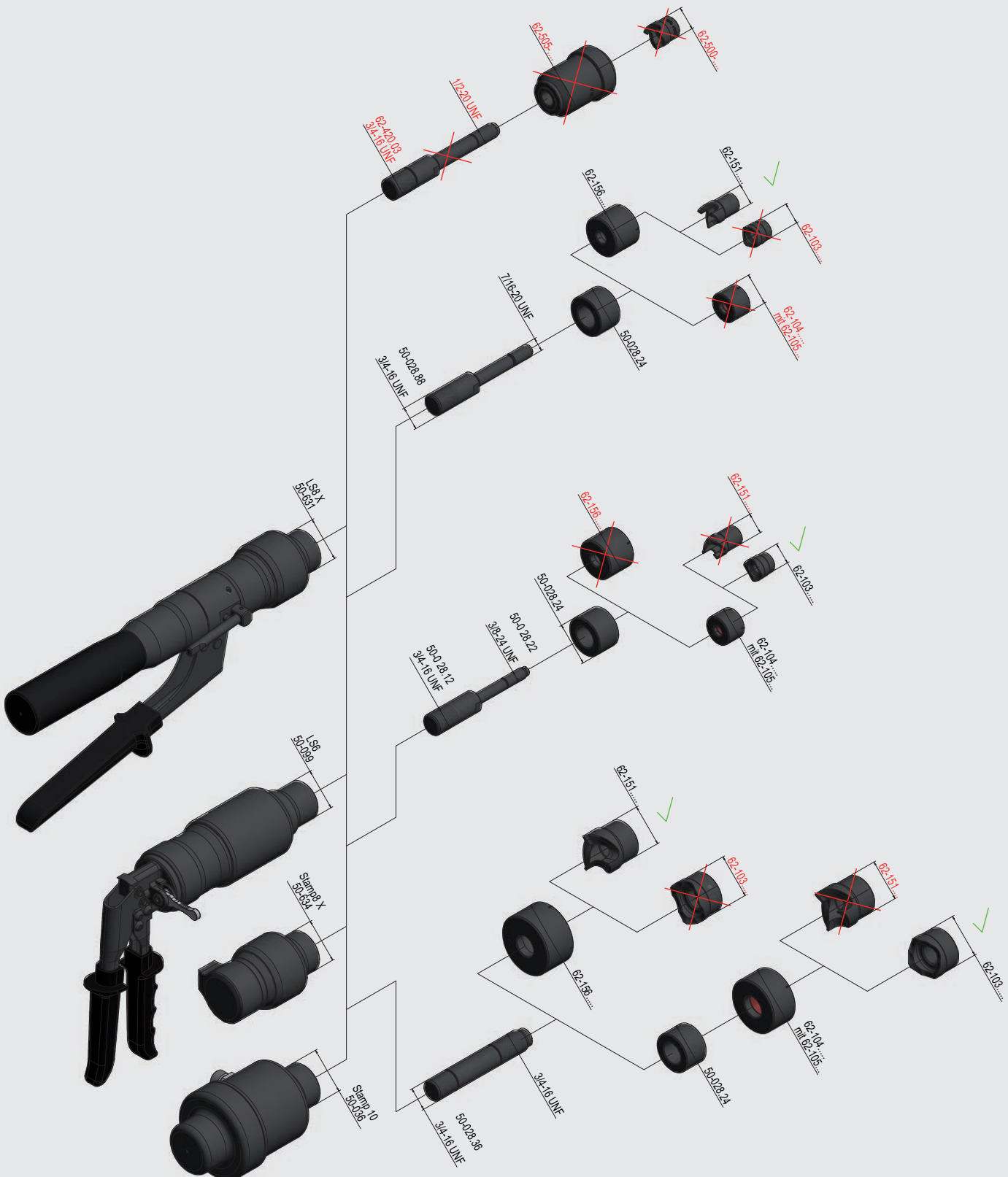
Punching tools for stainless steel plates 43

## All products from the old plate punchers program only while stocks last!

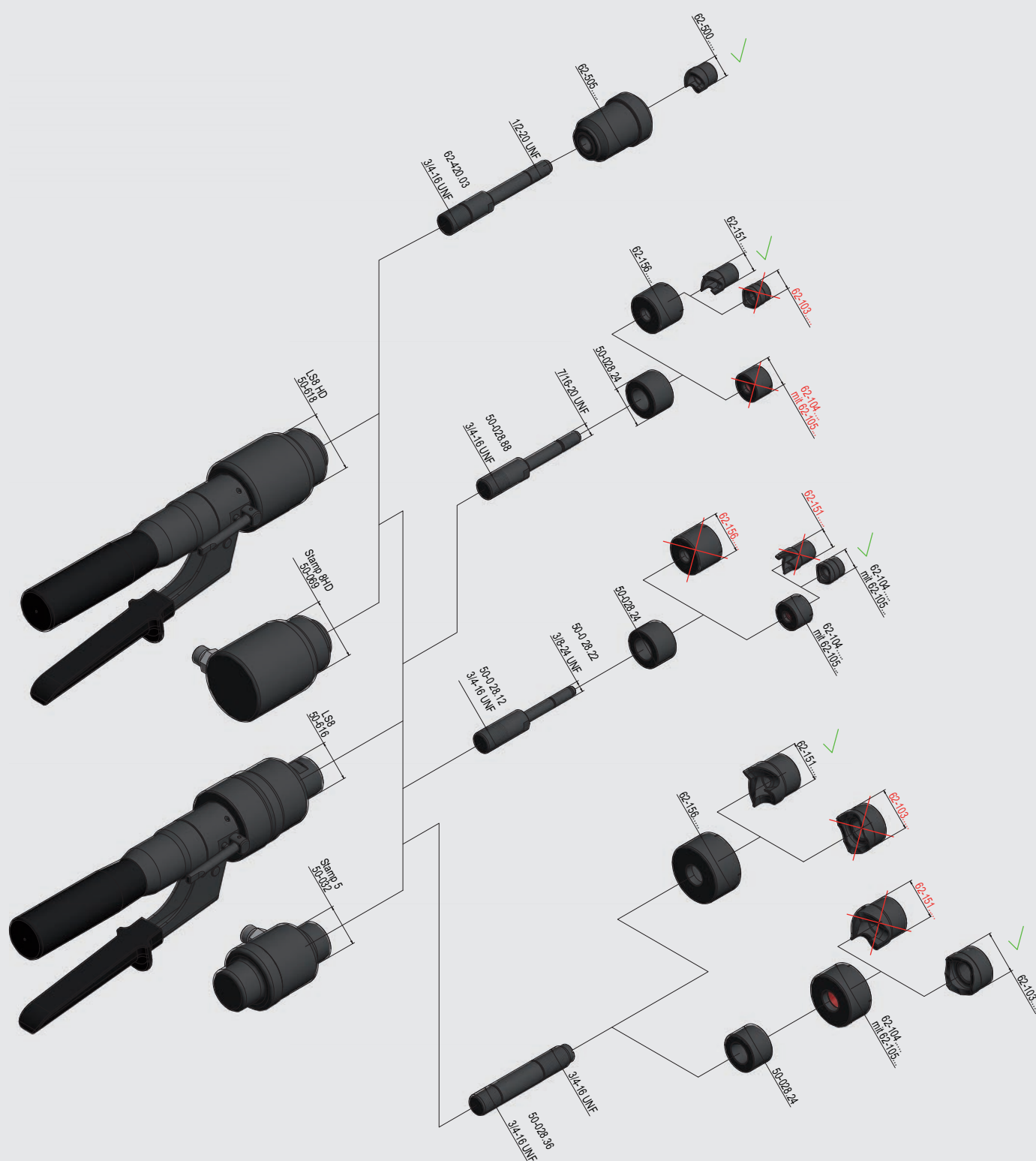
Set / Old plate punchers		Set / New plate punchers see p. 45
50-607 metrical LS6 Punching tool set	becomes	50-637 metrical LS6 Punching tool set
50-606 PG LS6 Punching tool set	becomes	50-638 PG LS6 Punching tool set
50-616 LS8	becomes	50-631 LS8 X
50-608 metrical LS8 Punching tool set	becomes	50-643 metrical LS8 X Punching tool set
50-603 PG LS8 Punching tool set	becomes	50-642 PG LS8 X Punching tool set
50-032 Stamp 5	becomes	50-634 Stamp8 X
50-618 LS8 HD	becomes	50-631 LS8 X
50-611 metrical LS8 HD Punching tool set	becomes	50-643 metrical LS8 X Punching tool set
50-602 PG LS8 HD Punching tool set	becomes	50-642 PG LS8 X Punching tool set
50-069 Stamp8 HD	becomes	50-634 Stamp8 X
62-139 Standard set punching tool metrical	becomes	62-157 Standard set punching tool metrical
62-106 Standard set punching tool PG	becomes	62-158 Standard set punching tool PG
62-501 Standard set punching tool metrical HD	becomes	62-157 Standard set punching tool metrical
62-402 Standard set punching tool PG HD	becomes	62-158 Standard set punching tool PG



## Control options with the current and new plate punchers



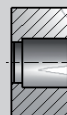
## Control options with the expiring plate punchers





only while stocks last

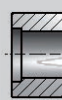
## Rods



Order no.:	Length	Diameter (mm)	Thread	Pre-drill	Sleeve	Adaption with
round						
50-028.22	73 mm	Ø 9,5 mm	3/8" - 24 UNF	Ø 10,5 mm	50-028.24	LS6, LS8, Stamp5, Stamp10
50-028.45	120 mm	Ø 16,0 mm	M16 x 1,5	Ø 17,0 mm	50-028.48	LS8, Stamp10
50-028.46	111 mm	Ø 12,0 mm	M12 x 1,5	Ø 13,0 mm	50-028.48	LS6, Stamp5
50-028.47	97 mm	Ø 10,0 mm	M10 x 1,0	Ø 11,0 mm	50-028.48	LS6, Stamp5
square + rectangular						
50-028.40	95 mm	Ø 16,0 mm	M12 x 1,5	Ø 17,0 mm	-	LS6, LS8, Stamp5, Stamp10
50-028.50	85 mm	Ø 15,0 mm	M12 x 1,5	Ø 16,0 mm	-	LS6, LS8, Stamp5, Stamp10
50-028.83	130 mm	Ø 22,0 mm	M16 x 1,5	Ø 23,0 mm	-	LS8, Stamp10
round HD						
62-401.01	90 mm	Ø 9,5 mm	3/8" - 24 UNF	Ø 10,5 mm	-	LS8 HD, Stamp8 HD
62-401.02	125 mm	Ø 19,0 mm	3/4" - 16 UNF	Ø 20,0 mm	-	LS8 HD, Stamp8 HD
62-420.03	121 mm	Ø 12,7 mm	1/2" - 20 UNF	Ø 14,0 mm	-	LS8 HD, Stamp8 HD
square HD						
62-401.03	94 mm	Ø 22,0 mm	M16 x 1,5	Ø 23,0 mm	-	LS8 HD, Stamp8 HD

only while stocks last

# Punching tools round

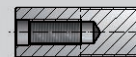


Size (mm)	Cutting edge	Elastic insert	Matrix	Sleeve	Rod	Adapter
Ø 15,2 (PG 9)	62-103.0152		62-104.0152	50-028.24	50-028.22	50-028.12
Ø 16,0	62-103.0160		62-104.0160			
Ø 16,2	62-103.0162		62-104.0162			
Ø 16,5 (M 16)	62-103.0165		62-104.0165			
Ø 16,8	62-103.0168		62-104.0168			
Ø 16,9	62-103.0169		62-104.0169			
Ø 18,6 (PG 11)	62-103.0186	62-105.01	62-104.0186			
Ø 19,0	62-103.0190		62-104.0190			
Ø 19,05 (3/4 ")	62-135.0190		62-136.0190			
Ø 19,5	62-103.0195		62-104.0195			
Ø 20,0	62-103.0200		62-104.0200			
Ø 20,4 (PG 13)	62-103.0204		62-104.0204			
Ø 20,5 (M 20)	62-103.0205		62-104.0205			
Ø 21,0	62-103.0210		62-104.0210			
Ø 21,5	62-103.0215	62-105.02	62-104.0215			
Ø 22,0	62-103.0220		62-104.0220			
Ø 22,5 (PG 16)	62-103.0225		62-104.0225			
Ø 24,0	62-103.0240		62-104.0240			
Ø 25,0	62-103.0250		62-104.0250			
Ø 25,4 (1 ")	62-135.0254		62-136.0254			
Ø 26,0	62-103.0260		62-104.0260			
Ø 26,5	62-103.0265		62-104.0265			
Ø 27,0	62-103.0270		62-104.0270			
Ø 27,3	62-103.0273	62-105.04	62-104.0273			
Ø 28,0	62-103.0280		62-104.0280			
Ø 29,0	62-103.0290		62-104.0290			
Ø 30,0	62-103.0300		62-104.0300			
Ø 30,1	62-103.0301		62-104.0301			
Ø 30,5	62-103.0305		62-104.0305			
Ø 31,7	62-103.0317		62-104.0317			
Ø 32,0	62-103.0320		62-104.0320			
Ø 32,5 (M 32)	62-103.0325		62-104.0325			
Ø 33,0	62-103.0330		62-104.0330			
Ø 35,0	62-103.0350	62-105.06	62-104.0350		50-028.36	
Ø 36,5	62-103.0365		62-104.0365			
Ø 37,0 (PG 29)	62-103.0370		62-104.0370			
Ø 38,1 (1 1/2 ")	62-135.0381		62-136.0381			
Ø 40,0	62-103.0400		62-104.0400			
Ø 40,5 (M 40)	62-103.0405		62-104.0405			



only while stocks last

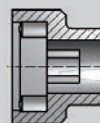
Punching tools round



Size (mm)	Cutting edge	Elastic insert	Matrix	Sleeve	Rod	Adapter
Ø 40,7	62-103.0407	62-105.06	62-104.0407	50-028.24	50-028.36	
Ø 42,0	62-103.0420		62-104.0420			
Ø 43,2	62-103.0432		62-104.0432			
Ø 43,5	62-103.0435		62-104.0435			
Ø 43,8	62-103.0438		62-104.0438			
Ø 44,0	62-103.0440		62-104.0440			
Ø 45,0	62-103.0450		62-104.0450			
Ø 45,5	62-103.0455	62-105.08	62-104.0455			
Ø 48,0	62-103.0480		62-104.0480			
Ø 50,0	62-103.0500		62-104.0500			
Ø 50,5 (M 50)	62-103.0505		62-104.0505			
Ø 51,0	62-103.0510		62-104.0510			
Ø 52,0	62-103.0520		62-104.0520			
Ø 54,0 (PG 42)	62-103.0540		62-104.0540			
Ø 55,0	62-103.0550	62-105.10	62-104.0550			
Ø 56,5	62-103.0565		62-104.0565			
Ø 58,0	62-103.0580		62-104.0580			
Ø 59,0	62-103.0590		62-104.0590			
Ø 60,0	62-103.0600		62-104.0600			
Ø 60,5	62-103.0605		62-104.0605			
Ø 63,0	62-103.0630		62-104.0630			
Ø 63,5 (M 63)	62-103.0635		62-104.0635	50-028.24		
Ø 65,0	62-103.0650		62-104.0650			
Ø 66,0	62-103.0660		62-104.0660			
Ø 67,0	62-103.0670		62-104.0670			
Ø 68,0	62-103.0680		62-104.0680			
Ø 70,0	62-103.0700		62-104.0700			
Ø 73,0	62-103.0730		62-104.0730			
Ø 75,0	62-103.0750		62-104.0750			
Ø 80,0	62-103.0800		62-104.0800			
Ø 82,0	62-103.0820		62-104.0820			
Ø 85,0	62-103.0850		62-104.0850			
Ø 86,0	62-103.0860		62-104.0860			
Ø 90,0	62-103.0900		62-104.0900			
Ø 92,0	62-103.0920		62-104.0920			
Ø 110,0	62-103.1100		62-104.1100			
Ø 120,0	62-103.1200		62-104.1200			

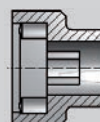
only while stocks last

#### Punching tools square



Size (mm)	Knurled nut	Cutting edge	Matrix	Rod
20 x 20	50-028.42	62-115.0200	62-116.0200	50-028.50
21 x 21	↓	62-115.0210	62-116.0210	↓
22 x 22		62-115.0220	62-116.0220	
26 x 26		62-115.0260	62-116.0260	
32,5 x 32,5	50-028.71	62-115.0325	62-116.0325	62-401.03
34 x 34	↓	62-115.0340	62-116.0340	↓
37 x 37		62-115.0370	62-116.0370	
40 x 40		62-115.0400	62-116.0400	
44,5 x 44,5	↓	62-115.0445	62-116.0445	↓
46 x 46		62-115.0460	62-116.0460	
48 x 48		62-115.0480	62-116.0480	
51,5 x 51,5		62-115.0515	62-116.0515	
66 x 66		62-115.0660	62-116.0660	
72 x 72		62-115.0720	62-116.0720	
92 x 92		62-115.0920	62-116.0920	
96 x 96		62-115.0960	62-116.0960	
110 x 110		62-115.1100	62-116.1100	

#### Punching tools square



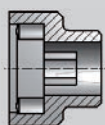



Size with radius (mm)	Knurled nut	Cutting edge	Matrix	Rod
31,2 x 31,2 R 2,0	50-028.42	62-145.0312	62-146.0312	50-028.50
52,2 x 52,2 R 4,5	50-028.43	62-145.0522	62-146.0522	50-028.41



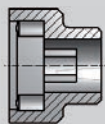



only while stocks last

Punching tools rectangular

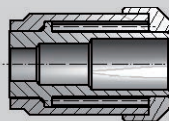
				
Size (mm)	Knurled nut	Cutting edge	Matrix	Rod
19,5 x 22	50-028.42	62-113.195220	62-114.195220	50-028.50
21 x 27	↓	62-113.210270	62-114.210270	50-028.40
22 x 30		62-113.220300	62-114.220300	50-028.50
22 x 33		62-113.220330	62-114.220330	↓
22 x 42		62-113.220420	62-114.220420	
22,5 x 45		62-113.225450	62-114.225450	
25 x 50		62-113.250500	62-114.250500	
26 x 27		62-113.260270	62-114.260270	50-028.40
26 x 51		62-113.260510	62-114.260510	50-028.50
26,5 x 51,5		62-113.265515	62-114.265515	50-028.50
27 x 31		62-113.270310	62-114.270310	50-028.40
27 x 33		62-113.270330	62-114.270330	50-028.50
29 x 71	50-028.44	62-113.290710	62-114.290710	50-028.40
30 x 40	↓	62-113.300400	62-114.300400	50-028.50
30 x 55		62-113.300550	62-114.300550	↓
30,5 x 50		62-113.305500	62-114.305500	
35 x 65		62-113.350650	62-114.350650	50-028.41
35 x 82		62-113.350820	62-114.350820	50-028.41
36 x 46		62-113.360460	62-114.360460	50-028.50
42 x 46		62-113.420460	62-114.420460	50-028.41
45 x 92		62-113.450920	62-114.450920	↓
46 x 70		62-113.460700	62-114.460700	
46 x 92		62-113.460920	62-114.460920	
67 x 136		62-113.670136	62-114.670136	
86 x 115		62-113.860115	62-114.860115	

Punching tools rectangular

				
Size with radius (mm)	Knurled nut	Cutting edge	Matrix	Rod
32,5 x 62,5 R 2,0	50-028.43	62-147.325625	62-148.325625	50-028.83

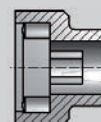
only while stocks last

#### Punching tools HD round



Size (mm)		Cutting edge	Matrix	Rod	Adapter
Ø 16,2	HD	62-500.0162	62-505.0162	62-401.01	50-028.12
Ø 16,5 (M 16)	HD	62-500.0165	62-505.0165	↓	↓
Ø 18,6 (PG 11)	HD	62-500.0186	62-505.0186		
Ø 20,4 (PG 13)	HD	62-500.0204	62-505.0204		
Ø 20,5 (M 20)	HD	62-500.0205	62-505.0205		
Ø 22,3	HD	62-500.0223	62-505.0223		
Ø 22,5 (PG 16)	HD	62-500.0225	62-505.0225		
Ø 25,5 (M 25)	HD	62-500.0255	62-505.0255		
Ø 27,5	HD	62-500.0275	62-505.0275		
Ø 28,3 (PG 21)	HD	62-500.0283	62-505.0283		
Ø 30,0	HD	62-500.0300	62-505.0300		
Ø 30,5	HD	62-500.0305	62-505.0305		
Ø 32,5 (M 32)	HD	62-500.0325	62-505.0325		
Ø 34,0	HD	62-500.0340	62-505.0340		
Ø 37,0 (PG 29)	HD	62-500.0370	62-505.0370	62-401.02	
Ø 40,5 (M 40)	HD	62-500.0405	62-505.0405	↓	
Ø 42,0	HD	62-500.0420	62-505.0420		
Ø 47,0 (PG 36)	HD	62-500.0470	62-505.0470		
Ø 54,0 (PG 42)	HD	62-500.0540	62-505.0540		
Ø 58,0	HD	62-500.0580	62-505.0580		
Ø 63,0	HD	62-500.0630	62-505.0630		
Ø 63,5 (M 63)	HD	62-500.0635	62-505.0635		
Ø 68,0	HD	62-500.0680	62-505.0680		

#### Punching tools HD square



Size (mm)	Knurled nut	Cutting edge	Matrix	Rod
32,5 x 32,5	50-028.71	62-115.0325	62-116.0325	62-401.03
34 x 34	↓	62-115.0340	62-116.0340	↓
37 x 37		62-115.0370	62-116.0370	





**BAUDAT**  
GmbH & Co. KG

[www.baudat.de](http://www.baudat.de)

New  
Punching tools program

Available now!



Control options for old and new  
plate punchers 48 - 49

Hydraulic plate punchers for  
steel and stainless steel plates 50 - 52

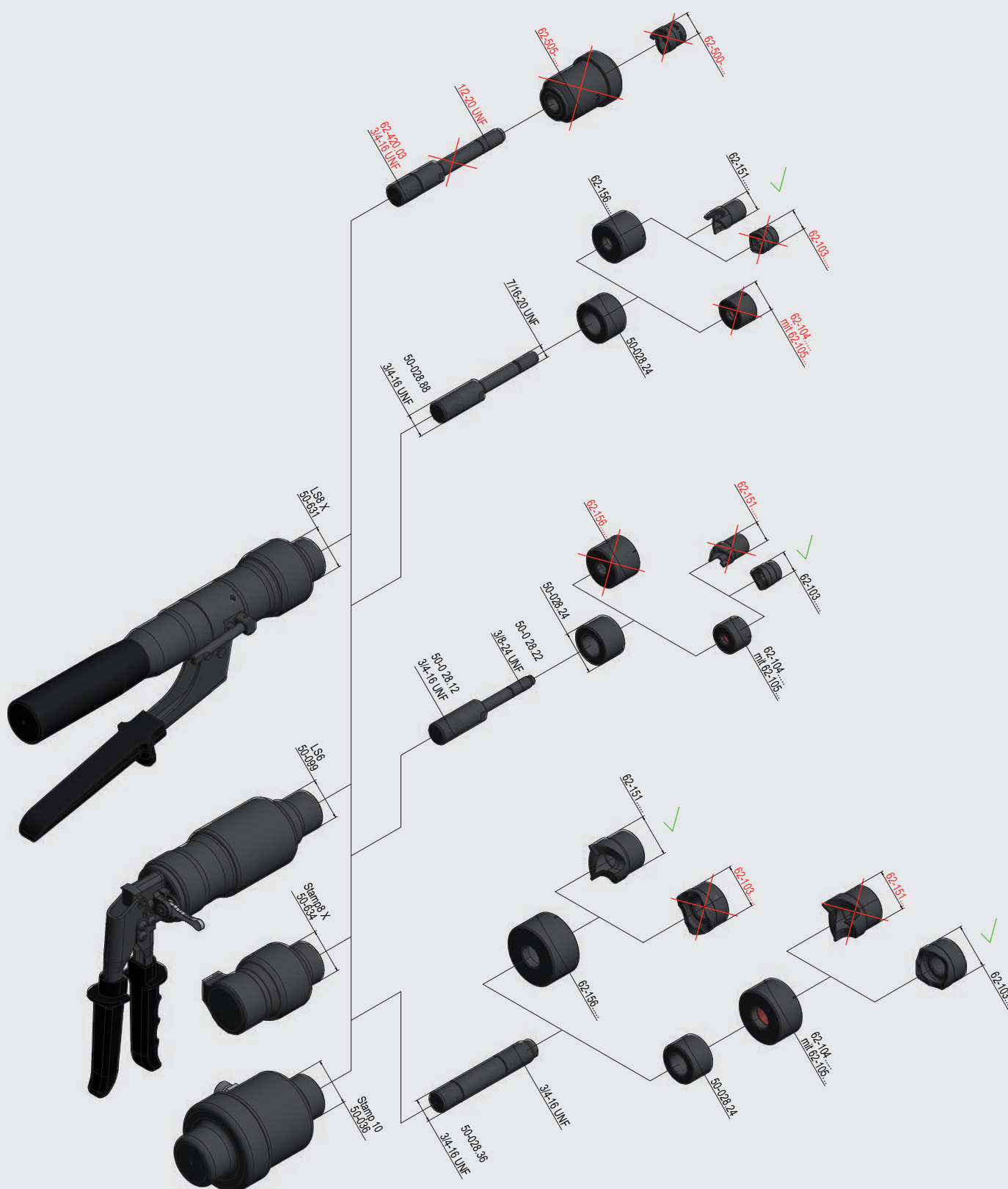
Cases and Accessories  
for plate punchers 53

Selection table punching tools  
round / square / special form 54 - 56

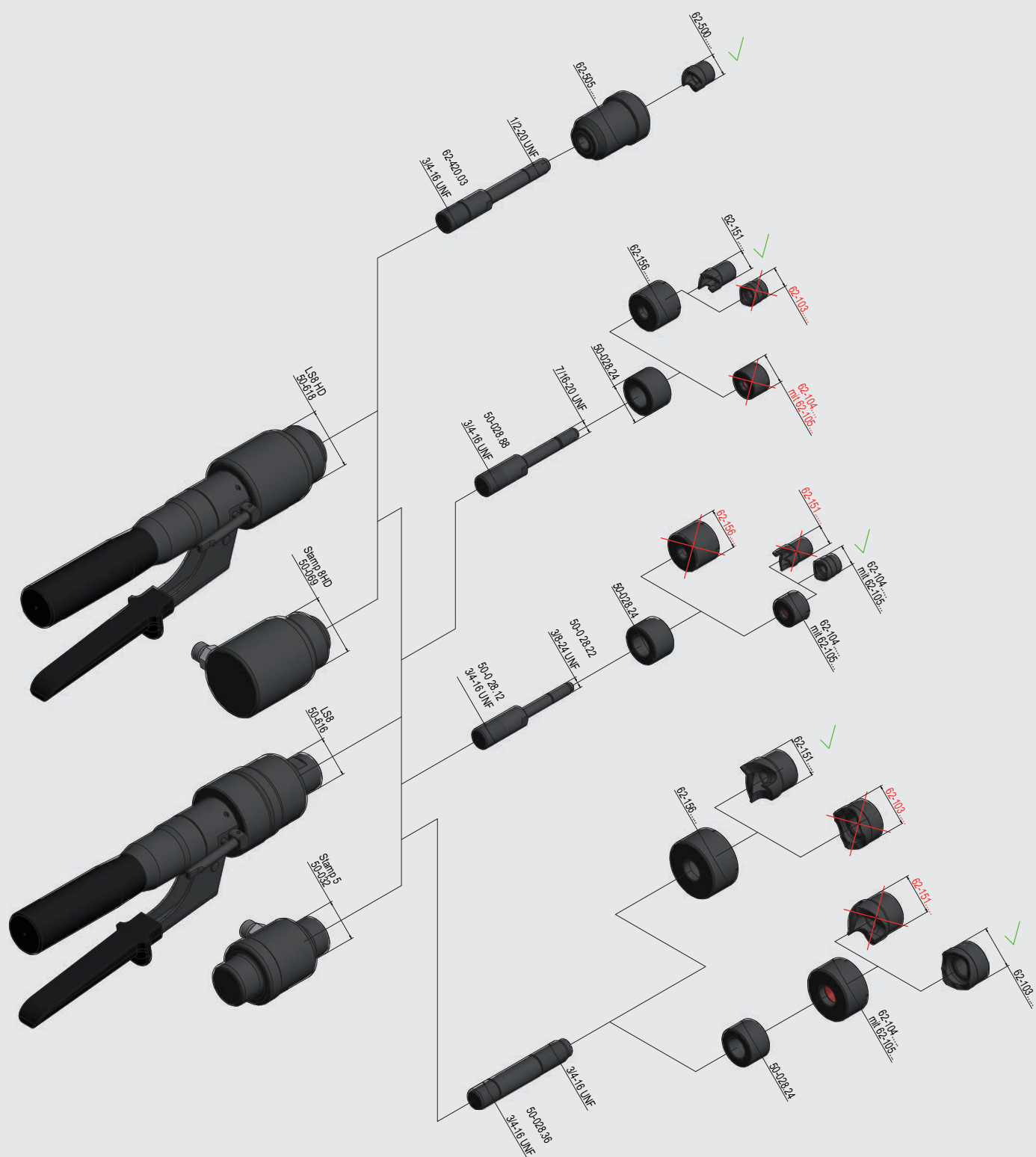


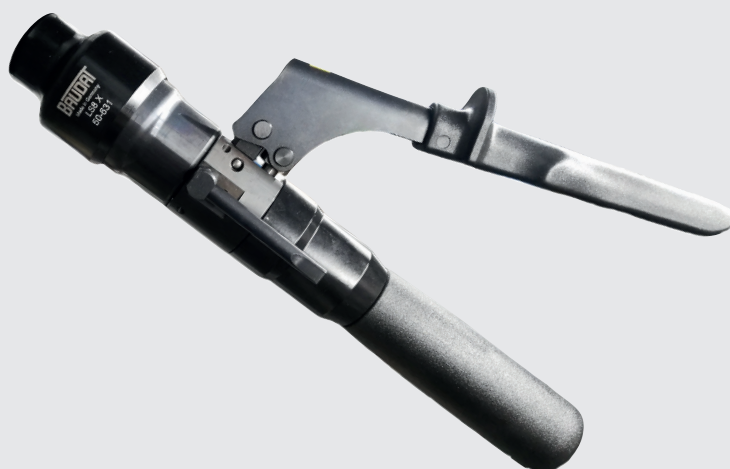


## Control options with the current and new plate punchers



## Control options with the expiring plate punchers





Hydraulic plate punchers for steel and stainless steel plates		
Description:	LS6	LS8 X
Order no.:	50-099	50-631
Punching capacity (max. plate thickness):	2 mm Steel plates: up to Ø 79,0 mm up to 72 x 72 mm up to 42 x 46 mm  3 mm Steel plates: up to Ø 47,0 mm up to 45 x 45 mm up to 25 x 50 mm  3 mm Stainless steel plates: up to Ø 47,0 mm	3 mm Steel plates: up to Ø 120,0 mm up to 110 x 110 mm up to 86 x 115 mm  3 mm Stainless steel plates: up to Ø 60,0 mm
Length:	230 mm	325 mm
Weight:	2,4 kg	2,0 kg
Punching power:	approx. 60 kN	approx. 80 kN
	Usable for building and maintaining control boxes, for car retrofitting and for sanitary application	Ideally suited for quick and frontal punching of control boards
Punches accurate slugs nearly free of burs		
Easy single handed using with small effort		
All parts replaceable		
Punching tools starting page 54		



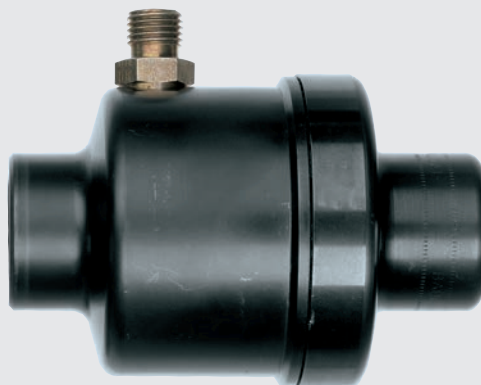
#### Punching tool set LS6 for steel and stainless steel plates

Description:	Punching tool set in the case metrical	Punching tool set in the case PG
Order no.:	50-637	50-638
Weight:	4,8 kg	4,4 kg
Dimensions:	380 x 280 x 70 mm	
Consists of:	- 1 LS6 - 5 Cutting edges and matrix: Ø 16,5 mm (M16),   Ø 20,4 mm (M20), Ø 25,4 mm (M25),   Ø 32,5 mm (M32), Ø 40,5 mm (M40) - 2 Rods - 1 Sleeve - 1 Plastic case with insert + cutting paste	- 1 LS6 - 6 Cutting edges and matrix: Ø 15,2 mm (PG9),   Ø 18,6 mm (PG11), Ø 20,4 mm (PG13),   Ø 22,5 mm (PG16), Ø 28,3 mm (PG21),   Ø 30,5 mm - 2 Rods - 1 Sleeve - 1 Plastic case with insert + cutting paste
Replacement case:	70-058 see p. 53	



#### Punching tool set LS8 X for steel and stainless steel plates

Description:	Punching tool set in the case metrical	Punching tool set in the case PG
Order no.:	50-643	50-642
Weight:	5,0 kg	4,5 kg
Dimensions:	380 x 280 x 70 mm	
Consists of:	- 1 LS8 X - 5 Cutting edges and matrix: Ø 16,5 mm (M16),   Ø 20,4 mm (M20), Ø 25,4 mm (M25),   Ø 32,5 mm (M32), Ø 40,5 mm (M40) - 2 Rods - 1 Sleeve - 1 Plastic case with insert + cutting paste	- 1 LS8 X - 6 Cutting edges and matrix: Ø 15,2 mm (PG9),   Ø 18,6 mm (PG11), Ø 20,4 mm (PG13),   Ø 22,5 mm (PG16), Ø 28,3 mm (PG21),   Ø 30,5 mm - 2 Rods - 1 Sleeve - 1 Plastic case with insert + cutting paste
Replacement case:	70-047 see p. 53	


**NEW**


#### Hydraulic punching tools for steel and stainless steel plates

Description:	Stamp8 X	Stamp10
Order no.:	50-634	50-036
Punching capacity (max. plate thickness):	3 mm Steel plates: up to Ø 120,0 mm up to 110 x 110 mm up to 86 x 115 mm  3 mm Stainless steel plates: up to Ø 60,0 mm	
Length:	104 mm	114 mm
Weight:	1,0 kg	1,8 kg
Punching power:	approx. 80 kN at 700 bar approx. 50 kN at 450 bar	approx. 100 kN bei 450 bar
Max. working pressure:	700 bar	450 bar
Required oil volume:	58 cm <sup>3</sup>	62 cm <sup>3</sup>

Usable for building and maintaining control boxes, for car retrofitting and for sanitary application

Due to the hose connection the tool can be used if there is little space as well

The tool can be connected to BAUDAT hand, foot, motor and battery pumps

Can be connected to following pumps:	Accessories:	Can be connected to following pumps:	Accessories:
Hand pump HHP8 (50-813)	0,75 m Hose (00-117.21)	Hand pump HHP8 (50-182)	0,75 m Hose (00-117.21)
Battery pump AP3 (50-180) Battery pump AP4 (50-184)	4,0 m Hose package with hand switch (50-703) or 4,0 m Hose package with foot switch (50-705)	Foot pump HFP12 (50-187)	3,5 m Hose (00-117.19)
		Motor pump HMP1 E (50-190)	4,0 m Hose package with 2x hand switch (50-293) or 4,0 m Hose package with 2x foot switch (50-248)
		Battery pump AP3 450 bar (50-185) Battery pump AP4 450 bar (50-189)	4,0 m Hose package with hand switch (50-703) or 4,0 m Hose package with foot switch (50-705)

Other lengths of hydraulic hose are available on request

Punching tools starting page 54



#### Cutting paste

Order no.: 00-169.05



#### Plastic case with inlet





For tool:	LS6	LS8 X
Order-No.:	70-058	70-047
Dimensions:	380 x 280 x 70 mm	
Weight:	1,0 kg	



#### Plastic case with inlet

For tool:	Stamp8 X + HHP8 Stamp 10 + HHP8	Stamp 10 + HFP12
Order-No.:	70-076	70-091
Dimensions:	460 x 370 x 140 mm	650 x 450 x 150 mm
Weight:	1,9 kg	4,2 kg


 Punching tools round **FOR STEEL AND STAINLESS STEEL PLATES**

					
Size (mm)	Cutting edge	Matrix	Sleeve	Knurled nut	Rod
Ø 15,2 (PG 9)	62-151.0152	62-156.0152	50-028.24	-	50-028.88
Ø 16,5 (M 16)	62-151.0165	62-156.0165	↓	-	↓
Ø 18,6 (PG 11)	62-151.0186	62-156.0186		-	
Ø 20,4 (PG 13, M 20)	62-151.0204	62-156.0204		-	
Ø 22,5 (PG 16)	62-151.0225	62-156.0225		-	
Ø 25,4 (1", M 25)	62-151.0254	62-156.0254		-	
Ø 28,3 (PG 21)	62-151.0283	62-156.0283	-	-	50-028.36
Ø 30,5	62-151.0305	62-156.0305	-	-	↓
Ø 32,5 (M 32)	62-151.0325	62-156.0325	-	-	
Ø 37,0 (PG 29)	62-151.0370	62-156.0370	-	-	
Ø 40,5 (M 40)	62-151.0405	62-156.0405	-	-	
Ø 47,0 (PG 36)	62-151.0470	62-156.0470	-	-	
Ø 50,8 (M 50)	62-151.0508	62-156.0508	-	-	
Ø 54,0 (PG 42)	62-151.0540	62-156.0540	-	-	
Ø 60,0 (PG 48)	62-151.0600	62-156.0600	-	-	↓

Other sizes on request

 Punching tools round **ONLY FOR STEEL PLATES**

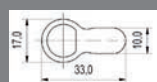
					
Size (mm)	Cutting edge	Matrix + Elastic insert	Sleeve	Knurled nut	Rod
Ø 63,5 (M 63)	62-103.0635	62-104.0635 + 62-105.10	50-028.24	-	50-028.36
Ø 100,0	62-103.1000	62-104.1000 + 62-105.10	-	-	50-028.36

Other sizes on request

 Punching tools square **ONLY FOR STEEL PLATES**

					
Size (mm)	Cutting edge	Matrix	Sleeve	Knurled nut	Rod
45 x 45	62-115.0450	62-116.0450	-	50-028.43	50-028.41
68 x 68	62-115.0680	62-116.0680	-	50-028.43	50-028.41

Other sizes on request

 Punching tool special form **ONLY FOR STEEL PLATES**


					
Size (mm)	Cutting edge	Matrix	Sleeve	Knurled nut	Rod
33,0 x 17,0 x 10,0 for profil cylinder	62-149.02	62-150.02	62-155.02	50-028.44	62-155.01

Other special forms on request

Rod Thread	Rod Diameter (mm)	Rod Length (mm)	Pre-drill (mm)
7/16" - 20 UNF	Ø 11,1	100	Ø 12
↓	↓	↓	↓
3/4" - 16 UNF	Ø 19,0	108	Ø 20,0
↓	↓	↓	↓

Rod Thread	Rod Diameter (mm)	Rod Length (mm)	Pre-drill (mm)
3/4" - 16 UNF	Ø 19,0	108	Ø 20,0
3/4" - 16 UNF	Ø 19,0	108	Ø 20,0

Rod Thread	Rod Diameter (mm)	Rod Length (mm)	Pre-drill (mm)
3/4" - 16 UNF	Ø 28,0	130	Ø 29,0
3/4" - 16 UNF	Ø 28,0	130	Ø 29,0

Rod Thread	Rod Diameter (mm)	Rod Length (mm)	Pre-drill (mm)
M12 x 1,75	Ø 12,8	107,5	Ø 13,0

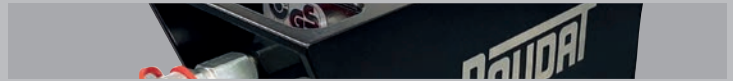


### Standardsets punching tools

Standardset punching tools for LS6, LS8 X, Stamp8 X, Stamp 10

Description:	metrical	PG
Order no.:	62-157	62-158
Punching capacity:	Steel and stainless steel plates up to max. 3 mm	
Consists of:	<ul style="list-style-type: none"> <li>- 4 Cutting edges and matrix:</li> <li>Ø 16,5 mm (M16)</li> <li>Ø 20,4 mm (M20)</li> <li>Ø 25,4 mm (M25)</li> <li>Ø 32,5 mm (M32)</li> <li>Ø 40,5 mm (M40)</li> <li>- 2 Rods</li> <li>- 1 Sleeve</li> </ul>	<ul style="list-style-type: none"> <li>- 6 Cutting edges and matrix:</li> <li>Ø 15,2 mm (PG9)</li> <li>Ø 18,6 mm (PG11)</li> <li>Ø 20,4 mm (PG13)</li> <li>Ø 22,5 mm (PG16)</li> <li>Ø 28,3 mm (PG21)</li> <li>Ø 30,5 mm</li> <li>- 2 Rods</li> <li>- 1 Sleeve</li> </ul>





Selection table pumps 59

Hand pump 60

Foot pump 60



Motor pumps 61 - 63

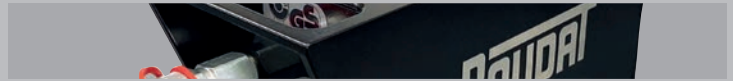
Battery pumps 64

Accessories for battery-operated tools 65



Selection table pumps				
Hand pumps		Pressure	Recommendation for our	Order no. Page
HHP8 for hose connection		450 bar	Punching tool	50-182 60
HHP8 for hose connection		700 bar	Punching tool	50-813 60
Foot pump				
HFP12		450 bar	Punching tool / Hydraulic cutters	50-187 60
Motor pumps				
HMP1 single-acting		450 bar	Hydraulic cutters	50-186 61
HMP1 E single-acting		450 bar	Punching tool	50-190 61
HMP2 WE single-acting alternating current		450 bar	Hydraulic cutters	50-101 62
HMP2 WE single-acting alternating current		700 bar	Hydraulic cutters	50-097 62
HMP2 DE single-acting three phase current		450 bar	Hydraulic cutters	50-102 62
HMP2 DE single-acting three phase current		700 bar	Hydraulic cutters	50-103 62
HMP2 WE RH double-acting alternating current		450 bar	Hydraulic cutters	50-106 62
HMP2 WE RH double-acting alternating current		700 bar	Hydraulic cutters	50-096 62
HMP2 DE RH double-acting three phase current		450 bar	Hydraulic cutters	50-104 62
HMP2 DE RH double-acting three phase current		700 bar	Hydraulic cutters	50-105 62
HMP3 DE single-acting three phase current		420 bar	Hydraulic cutters	50-056 63
HMP3 DE D single-acting three phase current		420 bar	Hydraulic cutters	50-135 63
HMP3 DE RH double-acting three phase current		420 bar	Hydraulic cutters	50-057 63
HMP3 DE RH D double-acting three phase current		420 bar	Hydraulic cutters	50-136 63
Battery pumps				
AP3		450 bar	Punching tool / Hydraulic cutters	50-185 64
AP3		700 bar	Punching tool	50-180 64
AP4		450 bar	Punching tool / Hydraulic cutters	50-189 64
AP4		700 bar	Punching tool	50-184 64

The hand, foot, motor and battery pumps described on the following pages only represent an overview with the general properties. The devices can be supplied with a fixed or selectable pressure in different versions. An adaption to individual applications is generally possible. We would be glad to determine the optimal combination for your application.



#### Hydraulic single-acting hand pump

Description:	HHP8
Order no.:	50-182 for hose connection 450 bar 50-813 for hose connection 700 bar
Length:	270 mm
Weight:	1,6 kg
Pressure fixed to 450 or 700 bar	
Output:	approx. 0,7 cm <sup>3</sup> /stroke
Usable oil volume:	approx. 67 cm <sup>3</sup>
Hand force:	19 kp
Can be combined with our punching tools	

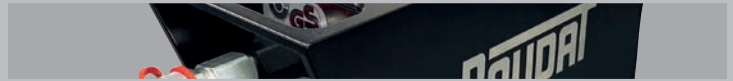


#### Hydraulic single-acting foot pump

Description:	HFP12
Order no.:	50-187
Dimensions:	345 x 200 x 105 mm
Weight:	3,4 kg
Pressure fixed to 450 bar	
Output:	approx. 1,0 cm <sup>3</sup> /stroke
Usable oil volume:	approx. 70 cm <sup>3</sup>
Foot power:	approx. 40 kp at 450 bar
Connection:	M16x1,5 external thread with 24° inner cone
Non-tilting base plate	
Can be combined with our hydraulic cutters and punching tools	



Motor pumps		
Description:	HMP1	HMP1 E
Order no.:	50-186	50-190
Dimensions:	290 x 135 x 295 mm	
Weight:	10,6 kg	
Pressure fixed to:	450 bar	
Pressureless Output:	approx. 0,3 l/min	
Usable oil volume:	approx. 0,3 l	
Voltage:	Alternating current 230 V - 50 Hz	
Power input:	0,35 kW	
Duty cycle:	50% duty cycle S3	
Motor remote control:	24 V Safety voltage	
Connection:	CA3 - Hirschmannstecker	
Hydraulic connection:	Quick coupling Cejn-series 115	
	Drop pressure in case the switch is released	Adhered pressure in case the switch is released
	Can be combined with our hydraulic cutters	Can be combined with our punching tools
Made in Germany and certified according to the German GS norm		



#### Motor pumps

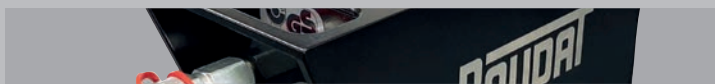
Description:	HMP2 WE	HMP2 DE	HMP2 WE RH	HMP2 DE RH
Order no.:	50-101 at 450 bar 50-097 at 700 bar	50-102 at 450 bar 50-103 at 700 bar	50-106 at 450 bar 50-096 at 700 bar	50-104 at 450 bar 50-105 at 700 bar
Dimensions:	320 x 215 x 380 mm		340 x 215 x 380 mm	
Weight:	23,0 kg			
Pressure fixed to:	450 bar or 700 bar			
Pressureless Output:	approx. 2,45 l/min at 450 bar approx. 1,7 l/min at 700 bar			
Usable oil volume:	approx. 1,3 l			
Voltage:	Alternating current 230 V - 50 Hz	Three phase current 400 V - 50 Hz	Alternating current 230 V - 50 Hz	Three phase current 400 V - 50 Hz
Power input:	1,1 kW			
Duty cycle:	50% duty cycle S3			
Motor remote control:	24 V Safety voltage			
Connection:	CA3 - Hirschmannstecker			
Hydraulic connection:	Quick coupling Cejn-series 115		P Quick coupling Cejn-series 115 R Quick coupling Cejn-series 117	

The motor pumps HMP2 are not designed for continuous operation

Can be combined with our hydraulic cutters



Motor pumps		
Description:	HMP3 DE	HMP3 DE RH
Order no.:	50-056 505-135 contin. operation	50-057 50-136 contin. operation
Dimensions:	750 x 380 x 700 mm	
Weight:	79,0 kg	
Pressure fixed to:	420 bar	
Pressureless Output:	approx. 4,1 l/min	
Usable oil volume:	approx. 2,4 l	
Voltage:	Three phase current 400 V - 50 Hz	
Power input:	2,2 kW	
Duty cycle:	50% duty cycle S3	
Motor remote control:	24 V Safety voltage	
Connection:	CA3 - Hirschmannstecker	
Hydraulic connection:	Quick coupling Cejn-series 115	P Quick coupling Cejn-series 115 R Quick coupling Cejn-series 117
Can be combined with our hydraulic cutters		



Battery pumps single-acting		
Description:	AP3	AP4
Order no.:	50-185 at 450 bar 50-180 at 700 bar	50-189 at 450 bar 50-184 at 700 bar
Dimensions:	294 x 126 x 120 mm	321 x 156 x 150 mm
Weight:	5,8 kg incl. battery	10,0 kg incl. battery
Pressure fixed to:	450 bar or 700 bar	
Pressureless Output:	approx. 0,37 l/min at 450 bar approx. 0,25 l/min at 700 bar	approx. 0,84 l/min at 450 bar approx. 0,71 l/min at 700 bar
Usable oil volume:	approx. 0,3 l	approx. 0,5 l
Voltage:	18 V Lithium ion battery	36 V Lithium ion battery
Capacity:	3,0 Ah	2,6 Ah
Duty cycle:	50% duty cycle S3	
Motor remote control:	24 V Safety voltage	
Connection:	CA3 - Hirschmannstecker	
Hydraulic connection:	Quick coupling Cejn-series 115	
	LED display battery charging	
	Charging time: 22 min	
	Can be combined with our hydraulic cutters and Punching tools	Can be combined with our hydraulic cutters
Made in Germany and certified according to the German GS norm		



#### Makita Battery 18 V, Li-Ion

Order no.: 00-109.15 for 3,0 Ah  
00-109.33 for 5,0 Ah

Weight: 0,6 kg

Battery voltage: 18 V

Battery capacity: 3,0 Ah or 5,0 Ah

Charging time 3,0 Ah: approx. 22 min.

Charging time 5,0 Ah: approx. 45 min.

Cell technology: Li-Ion

Can be combined with our battery pump AP3



#### Makita Battery charger for 18 V Li-Ion-Batteries

Order no.: 00-109.14

Weight: 1,0 kg

Mains voltage: 230 V

Voltage range: 18 V

Charging time 3,0 Ah: approx. 22 min.

Charging time 5,0 Ah: approx. 45 min.



#### Makita Battery 36 V / 2,6 Ah, Li-Ion

Order no.: 00-109.23

Weight: 1,3 kg

Battery voltage: 36 V

Battery capacity: 2,6 Ah

Charging time 2,6 Ah: approx. 22 min.

Cell technology: Li-Ion

Can be combined with our battery pump AP4



#### Makita Battery charger for 36 V Li-Ion-Batteries

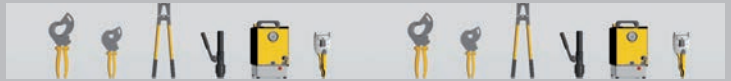
Order no.: 00-109.24

Weight: 1,0 kg

Mains voltage: 230 V

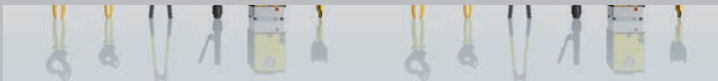
Voltage range: 36 V

Charging time 2,6 Ah: approx. 22 min.



Special tools

67 - 68



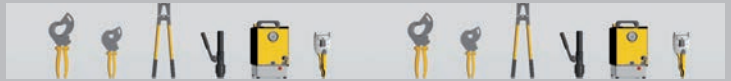
Punching tool	
Hydraulic punching tool	
Order no.:	45-413
Punching capacity:	for profilis up to 3 mm wall thickness
Length:	410 mm
Weight:	4,0 kg

Punching tools round		
Size (mm)	Plunger	Cutting bush
Ø 9,0	45-090.24	45-090.23
Ø 11,0	45-090.12	45-090.13



Double-sided punching tool	
Hydraulic double-sided punching tool	
Order no.:	45-090
Punching capacity:	for U-profiles with a width of 65 mm and up to 3 mm wall thickness
Length:	390 mm
Weight:	3,4 kg

Punching tools round		
Size (mm)	Plunger	Cutting bush
Ø 11,0	45-413.04	45-413.03



#### Flange press

Hydraulic flange press for tubes

Order no.:	45-429
Object to be pressed:	Pipe Ø 40 x 1,5
Length:	300 mm
Weight:	8,0 kg
Recommended operational pressure:	200 - 220 bar
Connection:	G 1/8



#### Notching tool for saw blades

Hydraulic notching tool for punching saw blades

Order no.:	45-008
Length:	475 mm
Weight:	23 kg
max. working pressure:	160 bar









# BAUDAT

GmbH & Co. KG

Alte Poststrasse 20  
D-88525 Dürmentingen

Tel.: +49 (0) 7371 / 506-0  
Fax +49 (0) 7371 / 506-16

Email: [info@baudat.de](mailto:info@baudat.de)  
[www.baudat.de](http://www.baudat.de)

Subject to modifications and errors excepted.

2022/2023

E

15-000